

| NEIGHBORHOOD CENTER | THE COLONY
THE COLONY, TX



PROJECT

Retail development located in The Colony, a suburb of Dallas, TX

Retail: 60,000 SF Building
21,925 SF Available

LOCATION

The Colony Retail Center is located 1/2 mile north of SH-121 fronting FM 423 (Main Street) at the corner of S. Colony Blvd. in The Colony, TX

| DEMOS |

Radius	Pop. (est. '08)	Daytime Pop.	HHI (est. '08)
1 mile	9,915	1,914	\$79,521
3 miles	44,559	9,405	\$82,167
5 miles	155,002	80,499	\$100,215

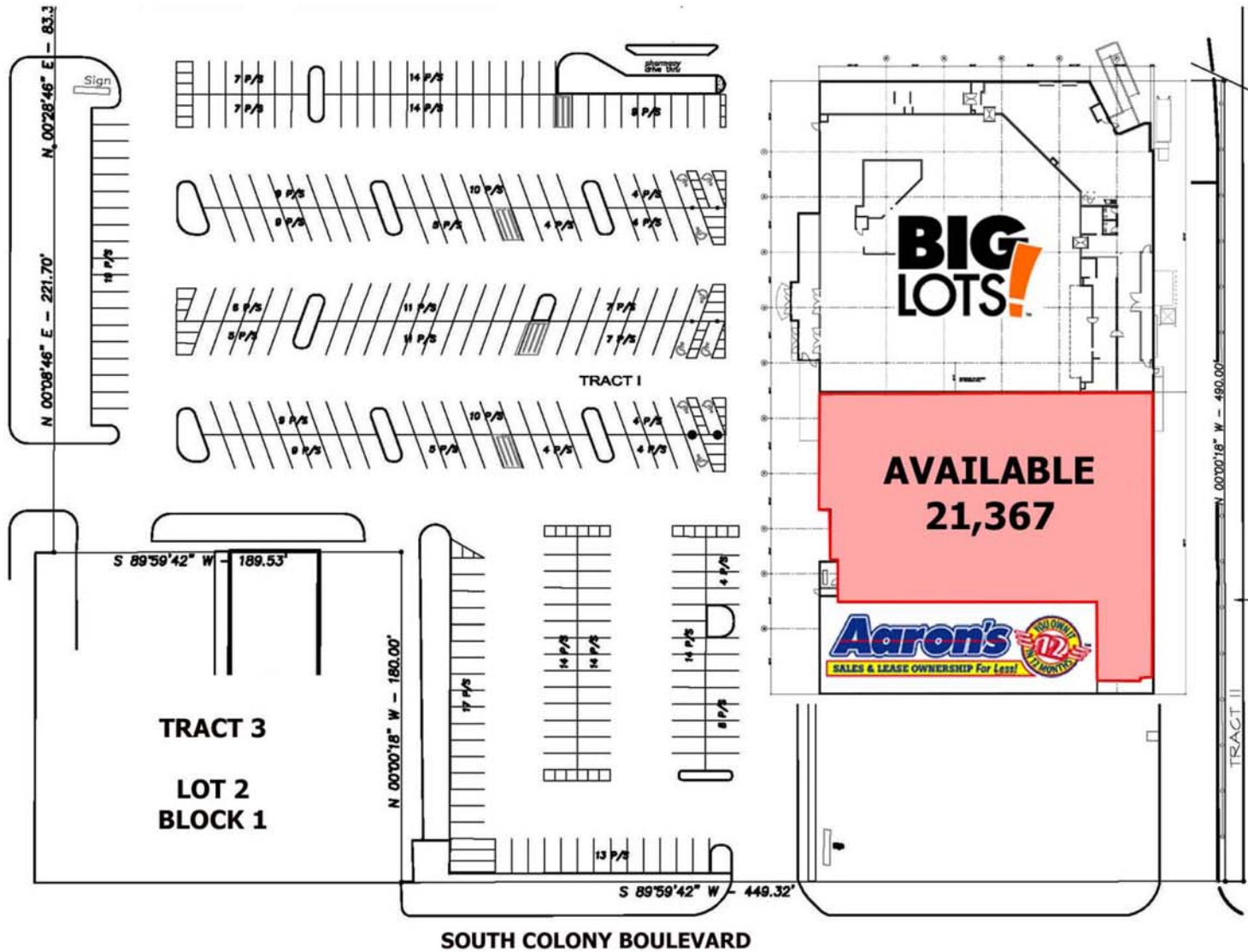
| TENANTS |

Big Lots
Aaron Rents

For more information on this property contact:

Michael Wheat
Senior Director of Leasing - West Region
214-561-8875 Office
michael.wheat@cypressequities.com

MAIN STREET (FARM ROAD 423)



Disclaimer: Specific names of tenants, their status, location and size are (i) not intended to be and should not be or have been relied upon, (ii) subject to change, modification and deletion by Landlord and (iii) not a representation or warranty as to the opening or continued operation of any store named or depicted on the site plan.

| THE COLONY RETAIL CENTER |

For more information on this property contact:

Michael Wheat
 Senior Director of Leasing - West Region
 214-561-8875 Office
 michael.wheat@cypressequities.com

The information contained herein was obtained from sources believed reliable; however, Cypress Equities makes no guarantees, warranties or representations as to the completeness or accuracy thereof. The presentation of this property is submitted subject to errors, omissions, change of price or conditions prior to sale or lease or withdrawal without notice.